

drawings explaining the constructions of the proof

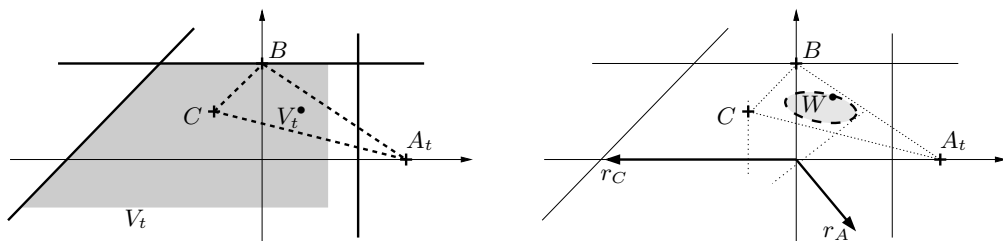


Figure 7: The mapping $V \mapsto V^\bullet$ is not monotonic

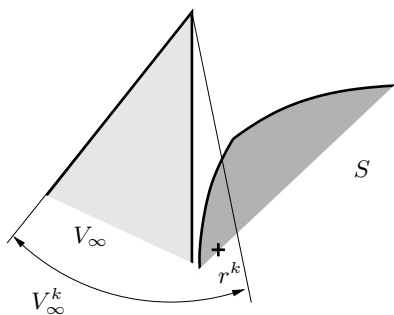


Figure 8: Constructing in S an unbounded sequence “tending to” V

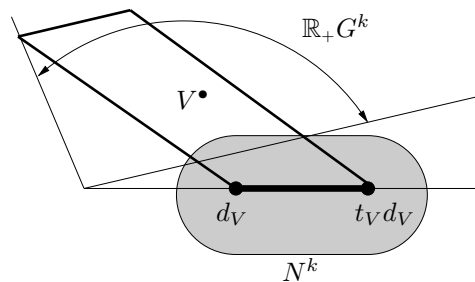


Figure 9: Chopping off V^\bullet near an extreme ray

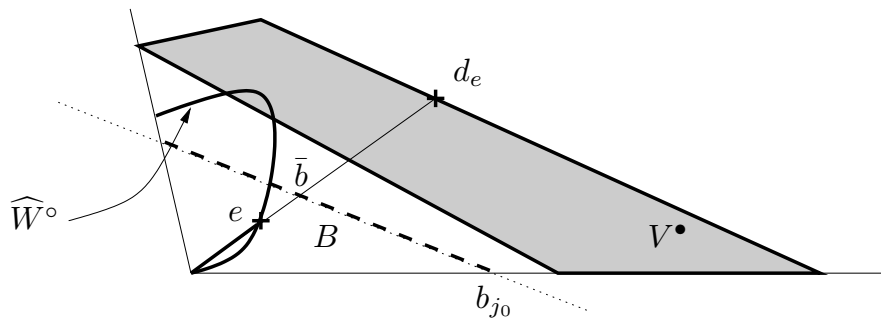


Figure 10: The extreme ray $\mathbb{R}_+ b_{j_0}$ contains some point in $V^\bullet \setminus W^\bullet$